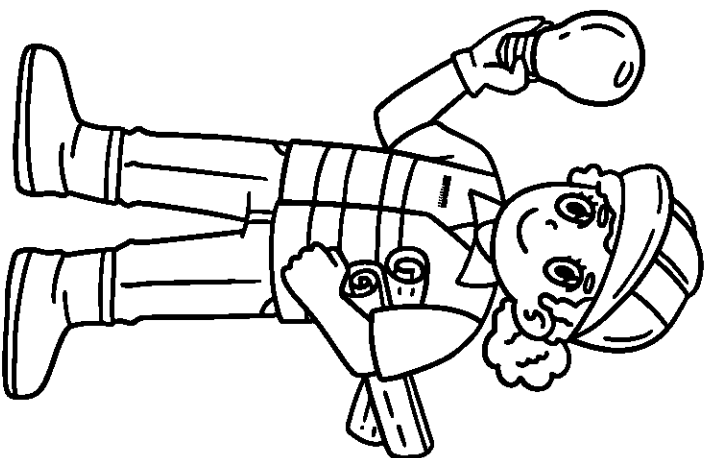
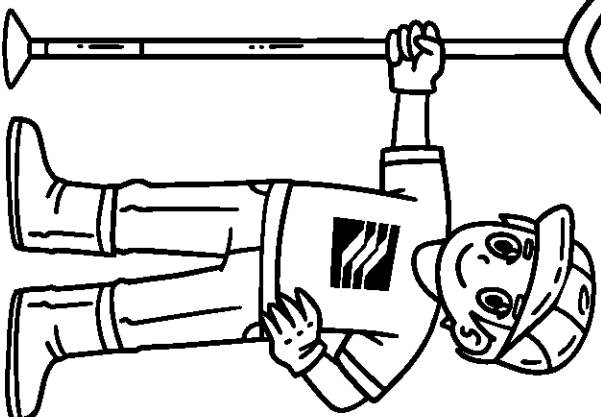
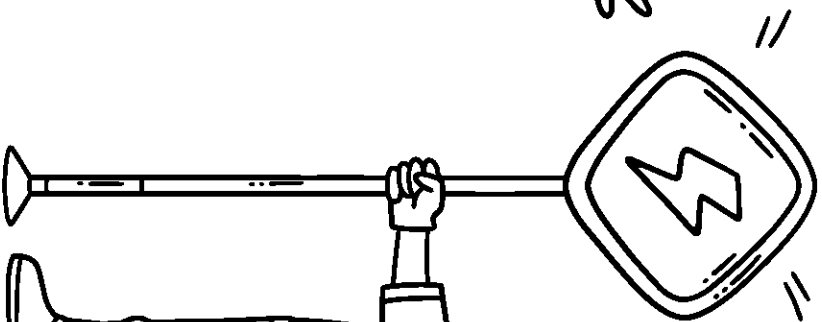
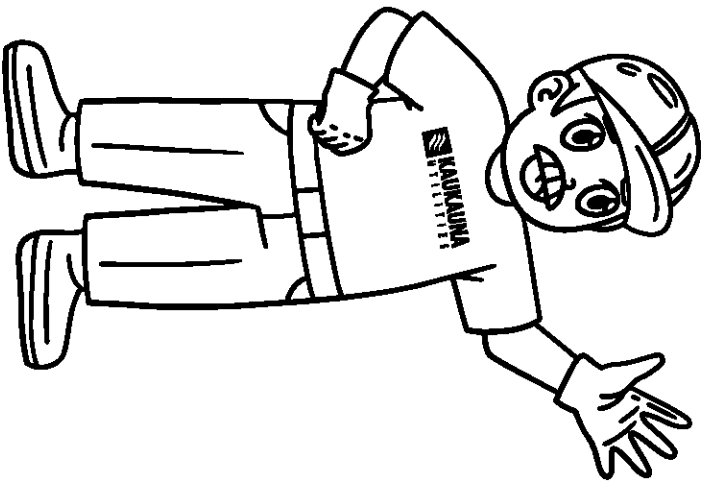


PLAY IT SAFE
AROUND
ELECTRICITY





ELECTRICAL SAFETY COLORING CONTEST

Hey there, budding artists and safety enthusiasts! Ready to showcase your creativity while learning about electrical safety? May is all about sparking awareness, and we want YOU to join in on the fun with our **Electrical Safety Coloring Contest!**

OFFICIAL CONTEST RULES

- Children ages 4-12 may enter. One submission per child. *Must be a Kaukauna Utilities customer.
- Entries must be received by **Monday, June 10th.**
- Entries can be mailed to the address below, placed in the drop box in the KU parking lot, dropped off at our office, or scanned and emailed to bsimonson@ku-wi.org.
Kaukauna Utilities - Attn: 2024 Coloring Contest
777 Island Street
Kaukauna, WI 54130
- Coloring page can be found on www.kaukaunautilities.com or stop by the utility office for a copy.
- Entries may be displayed in the local utility office, publications, or on official social media channels.
- Please email bsimonson@ku-wi.org with questions.

PRIZES

- There will be one winner from each age group: ages 4-6, ages 7-9, & 10-12.
- Winners will be awarded \$25 Chamber Bucks and a KU swag bag.
- Winners will be selected by Kaukauna Utilities staff, contacted directly, and announced on the Kaukauna Utilities Facebook page.

ENTRANT CONTACT INFORMATION

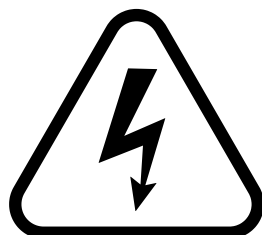
Parent or Legal Guardian Name:

Child's Name/Age:

Phone Number:

Address:

Email:



ELECTRICAL SAFETY TIPS

- **Never** touch broken electrical cords or ones that have wire showing.
- **Never** stick your finger or any object into light sockets or electrical outlets.
 - **Do not** pull on cords to unplug them. Hold on to the plug instead.
- **Do not** touch anything electrical while you are wet or standing in water.
 - Stay **far away** from fallen power lines.
- **Never** fly kites or balloons near power lines – electricity can travel down kite strings or wires.
 - **Do not** climb power poles or trees close to power lines.